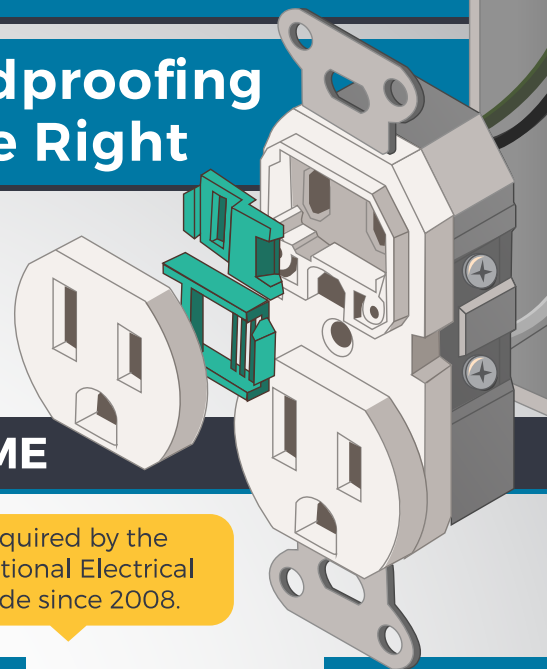


# TAMPER RESISTANT RECEPTACLES

## Childproofing Done Right



A study by Temple University found that **100%** of all 2-4 year olds were able to remove one type of plastic outlet cap **within 10 seconds**. Properly childproof your outlets by installing **Tamper Resistant Receptacles**.



### HOW TO PROPERLY CHILDPROOF YOUR HOME

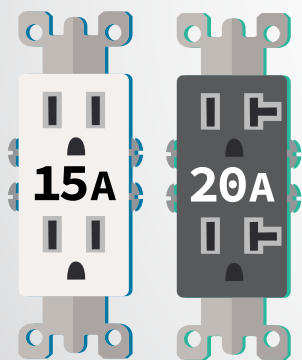
⚡ Tamper Resistant Receptacles offer a permanent solution to outlet covers.

⚡ Built in shutters prevent foreign objects from being inserted into the outlet.

⚡ Required by the National Electrical Code since 2008.

#### ► WHERE TO INSTALL

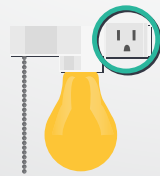
All **15A - 20A, 125v** and **150v** outlets in the following areas must be tamper resistant:



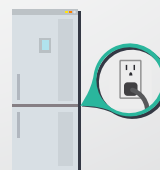
#### ► EXCEPTIONS



Outlets located more than **5 1/2 ft** above the floor.



Outlets that are part of a **luminaire**.



Outlets dedicated to **appliances that cannot be easily moved**.

#### ► NEW IN 2017

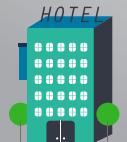
Tamper Resistant Receptacles are **required** in new and renovated:



**Childcare** facilities.



**Preschools** and **elementary education** facilities.



**Hotel** and **motel** guest rooms.



**Gyms, skating rinks, auditoriums,** and **places of waiting**.



**Offices, corridors, waiting rooms,** and similar rooms in **clinic, medical and dental offices,** and **outpatient facilities**.



[www.facebook.com/ESFi.org](http://www.facebook.com/ESFi.org)

[www.twitter.com/ESFIdotorg](http://www.twitter.com/ESFIdotorg)

[www.youtube.com/ESFIdotorg](http://www.youtube.com/ESFIdotorg)

**MAY IS NATIONAL ELECTRICAL SAFETY MONTH**